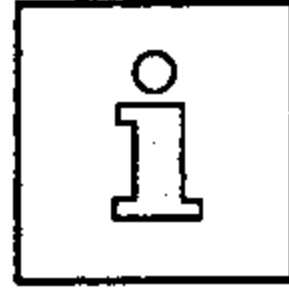


PFAFF

Supplement to the
instruction manual and parts list for
machines of the series
1050 / 1180 SRP

1 Supplement for instruction manual

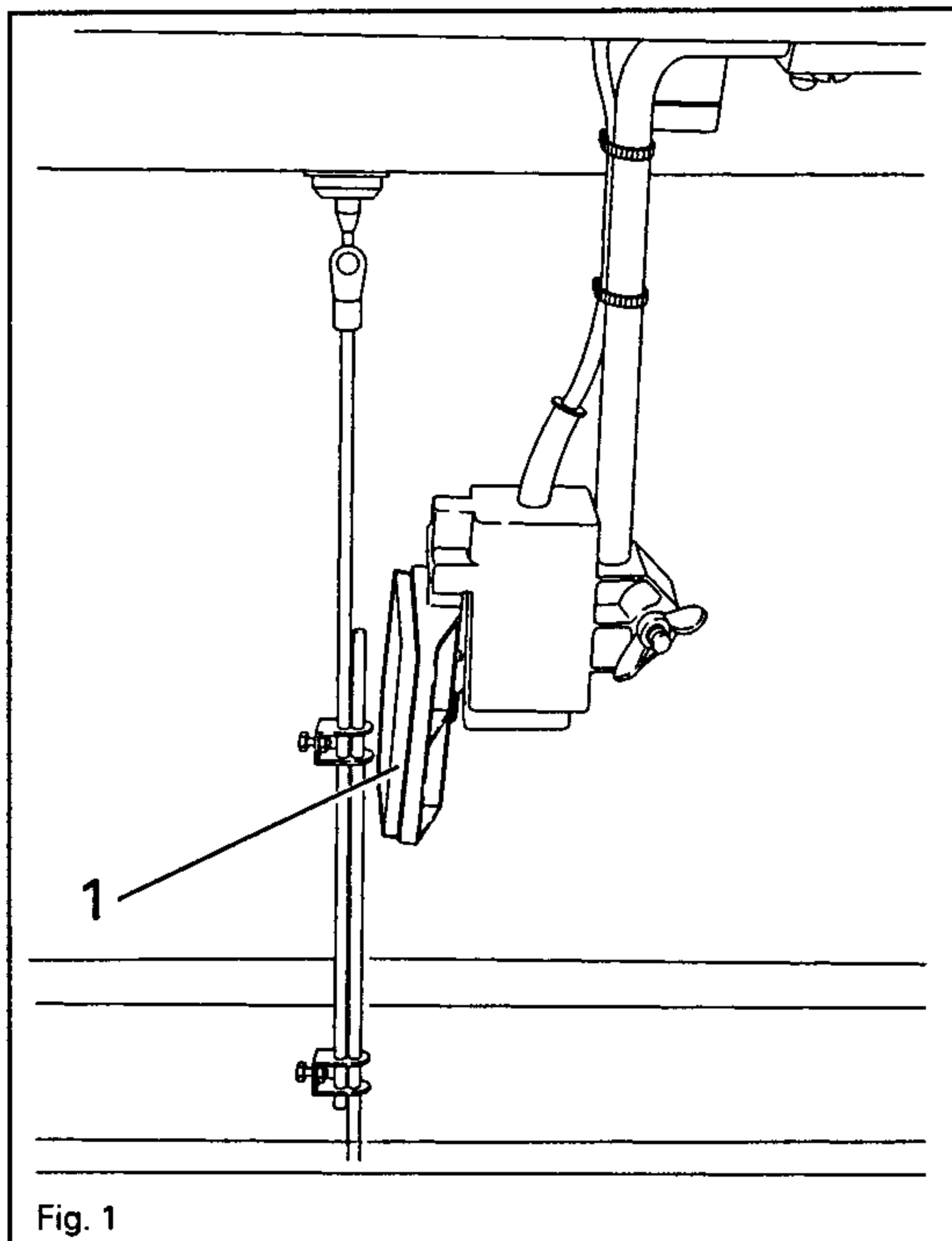
1.01 SRP-System (Speed responsive pressurefoot control)



By means of a linear motor, the SRP-system makes it possible to adapt the pressure on the presser foot to suit the respective sewing speed or the workpiece. In addition the clearance under the presser foot can be adjusted individually.

All adjustments are made by changing the parameters (See Chapters 1.03 and 1.04)

1.02 Knee switch

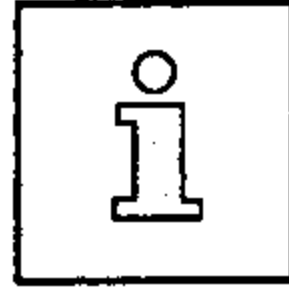


- By operating knee switch 1, the presser foot can be raised when sewing is interrupted.

Fig. 1

1 Supplement for instruction manual

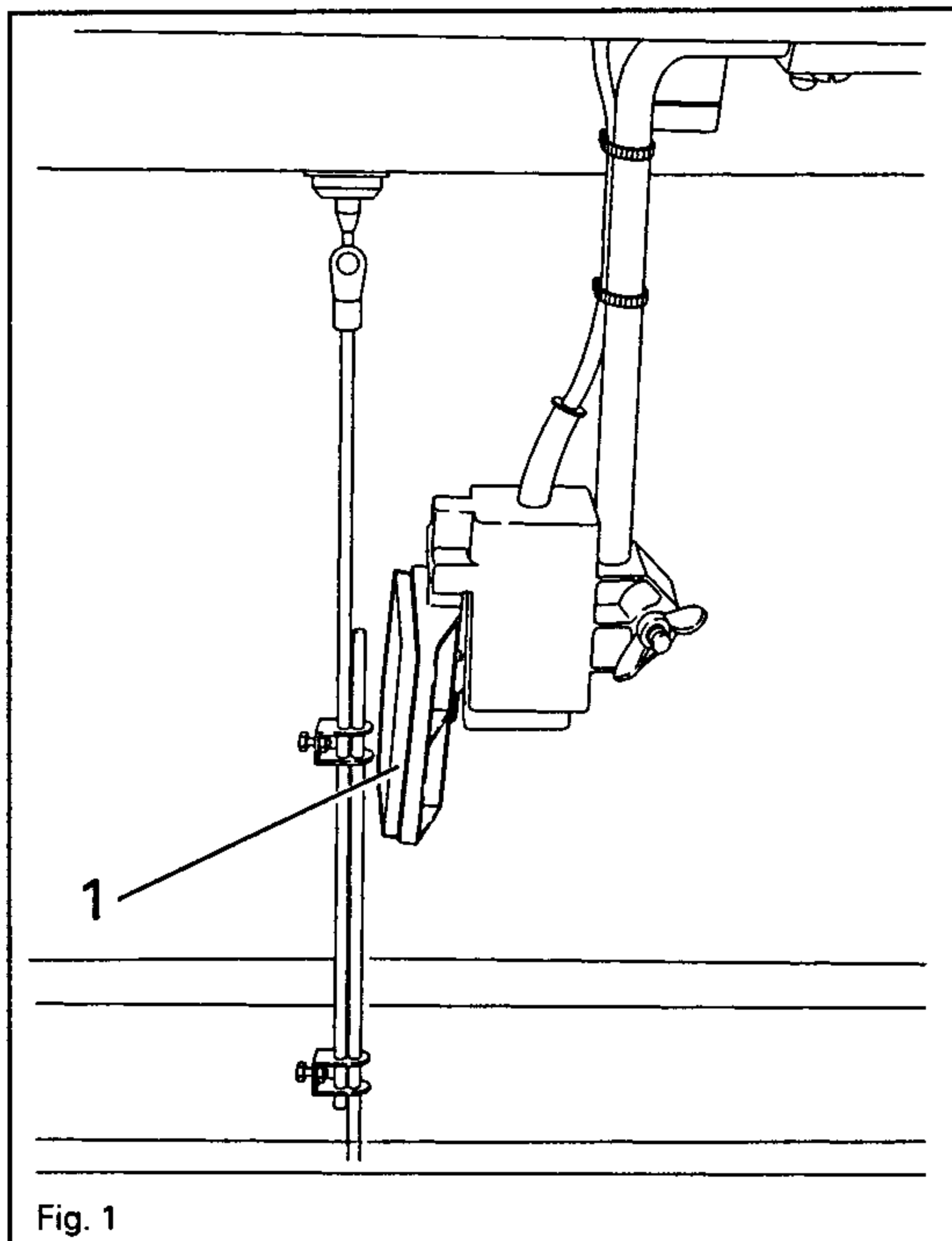
1.01 SRP-System (Speed responsive pressurefoot control)



By means of a linear motor, the SRP-system makes it possible to adapt the pressure on the presser foot to suit the respective sewing speed or the workpiece. In addition the clearance under the presser foot can be adjusted individually.

All adjustments are made by changing the parameters (See Chapters 1.03 and 1.04)

1.02 Knee switch



- By operating knee switch 1, the presser foot can be raised when sewing is interrupted.

Fig. 1

1.04

List of parameters

not in version "C"

Group	Parameter	Description	Access level	Setting range	Standard value
2	250	Presser foot lowering speed	B, C	0 - 255	5
	251	Presser foot clearance when raising presser foot with automatic presser foot lift	B, C	0 - 255	190
	252	Presser foot clearance when raising pressure foot with knee switch	B, C	0 - 255	150
	256	Constant presser foot pressure before sewing	B, C	0 - 32	10
	257	Constant spring pressure during the feed phase	B, C	0 - 90	60
	258	Machine class I = 1051 and 1181 II = 1053 and 1183	B, C		II
	263	Display on control panel I = on II = off	B, C	I - II	I
	268	Beginning of the presser foot pressure (on the 1051 and 1181)	C	0 - 126	12
	269	Beginning of the presser foot pressure (on the 1053 and 1183)	C	0 - 126	81
	271	Presser foot pressure dependent on speed	B, C	0 - 60	20
	272	Presser foot pressure dependent on speed	B, C	0 - 60	20
	287	Clearance under presser foot when raised by pedal (pedal position -1)	B, C	0 - 255	150
	288	Presser foot pressure (pedal position 0)	B, C	0 - 255	80

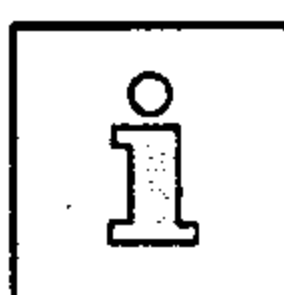
Starting point of pressure on the foot for each stitch during sewing. The ending pressure point is constant and cannot be changed.

Pressure value for F1 cannot be changed.

Pressure value for F2 can be changed at parameter 271.

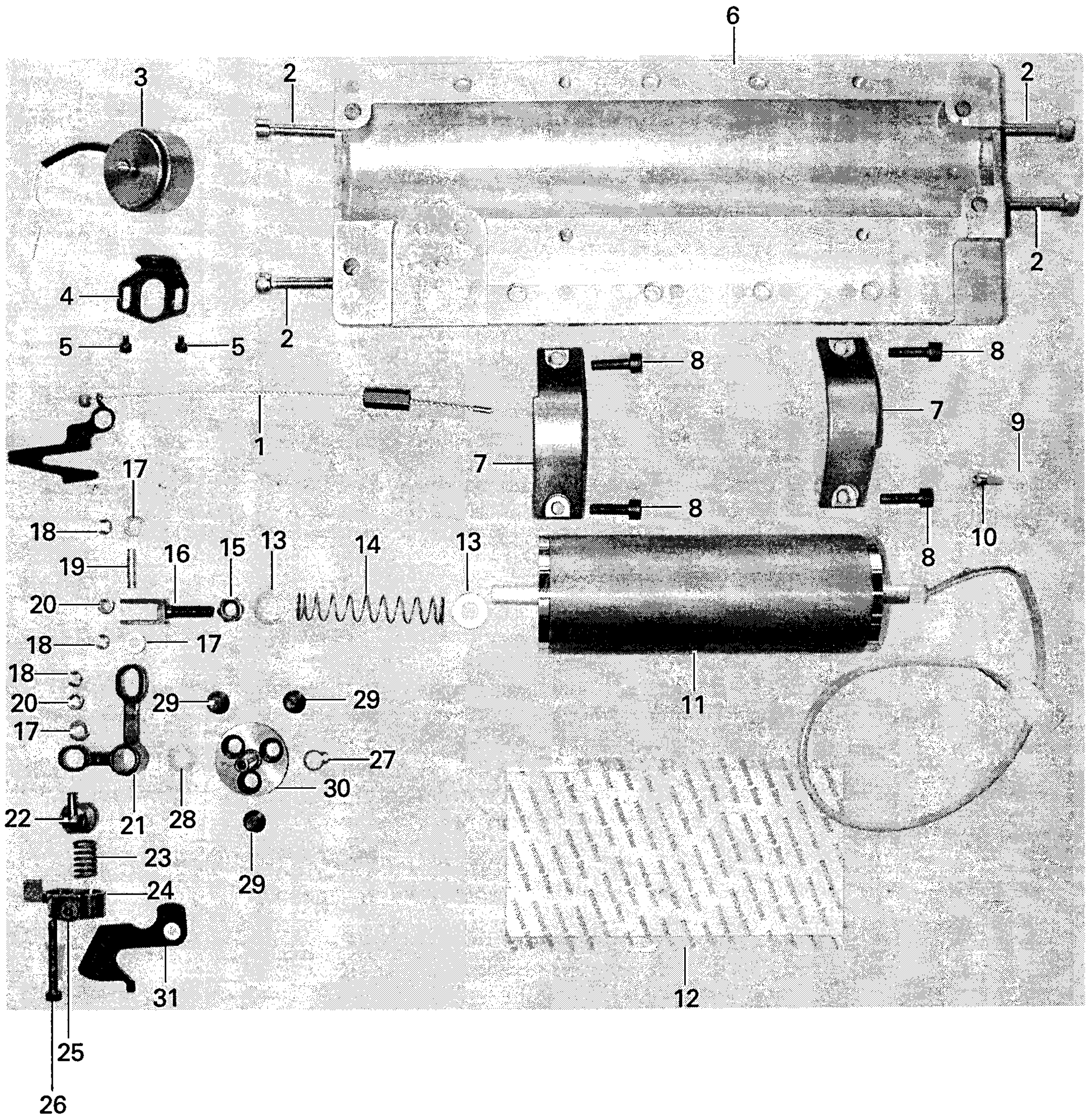
Pressure value for F3 can be changed at parameter 272.

For the machine to operate, F5 plus F1, F2, or F3 must be on for sewing.



When function key F5 is activated, the parameters 271 and 272 can be requested with the function keys F2 and F3.

For more information and displays see the motor instruction manual.



Pos.-Nr. Item No. N° pos. N° de pos.	Teile-Nr. Part No. N° de pieces N° de pieza
1	91-262 905-91
2	11-130 305-25
3 - 5	91-262 962-91
3	71-170 002-20
4	91-262 958-15
5	11-130 086-15
6 - 30	91-262 993-91
6	91-262 899-05
7	91-262 900-05
8	11-130 233-15
9	71-370 001-31
10	11-130 167-15
11	91-262 893-91
12	91-262 908-05
13	12-360 063-05
14	91-262 775-05
15	12-024 191-15

Pos.-Nr. Item No. N° pos. N° de pos.	Teile-Nr. Part No. N° de pieces N° de pieza
16	91-262 929-15
17	12-360 043-05
18	12-640 130-55
19	91-262 930-05
20	99-137 341-01
21	91-262 933-15
22	91-262 926-11
23	91-262 770-05
24 - 25	91-262 769-92
24	91-262 769-05
25	11-132 223-15
26	11-130 203-15
27	12-610 190-45
28	91-262 931-05
29	11-225 220-15
30	91-262 765-15
31	91-262 790-15

PFAFF

PFAFF Industrie Maschinen GmbH

Postfach 3020
D-67653 Kaiserslautern

Königstr. 154
D-67655 Kaiserslautern

Telefon: (0631) 200-0
Telefax: (0631) 17202
E-Mail: info@pfaff-industrial.com

Gedruckt in der BRD
Printed in Germany
Imprimé en R.F.A.
Impreso en la R.F.A.
Отпечатано във