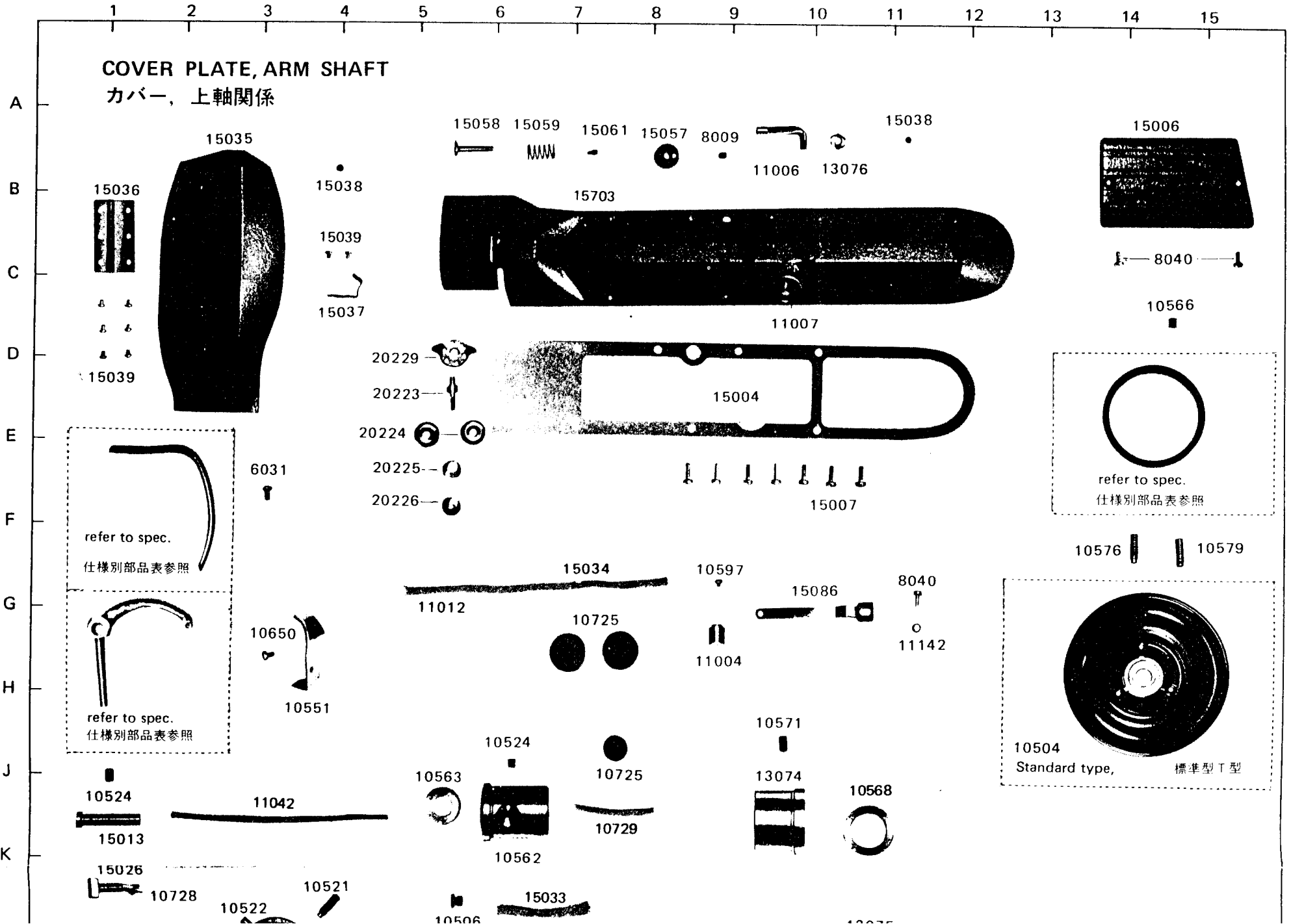


SINGER
210B6LG,7LG

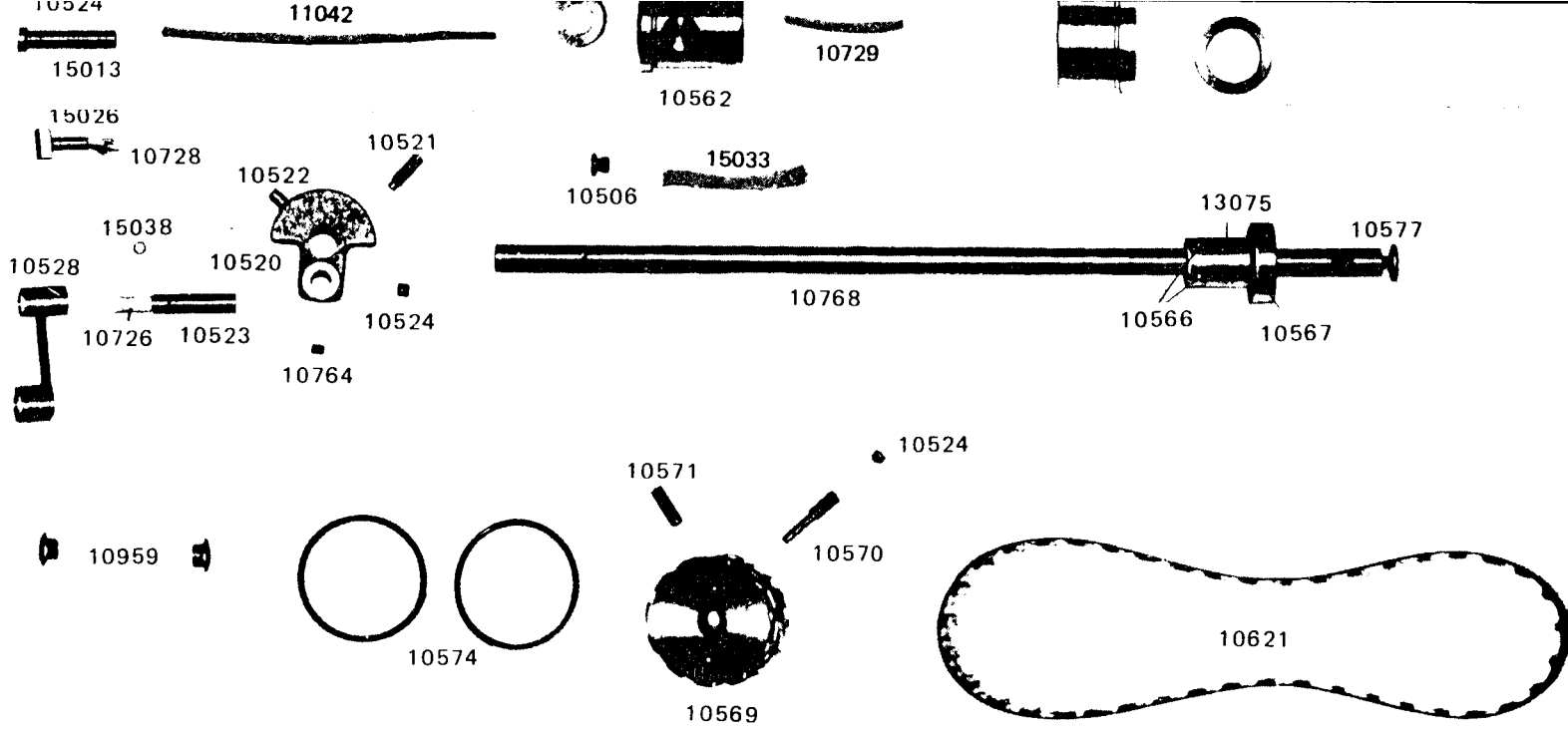
SINGER*

PARTS LIST

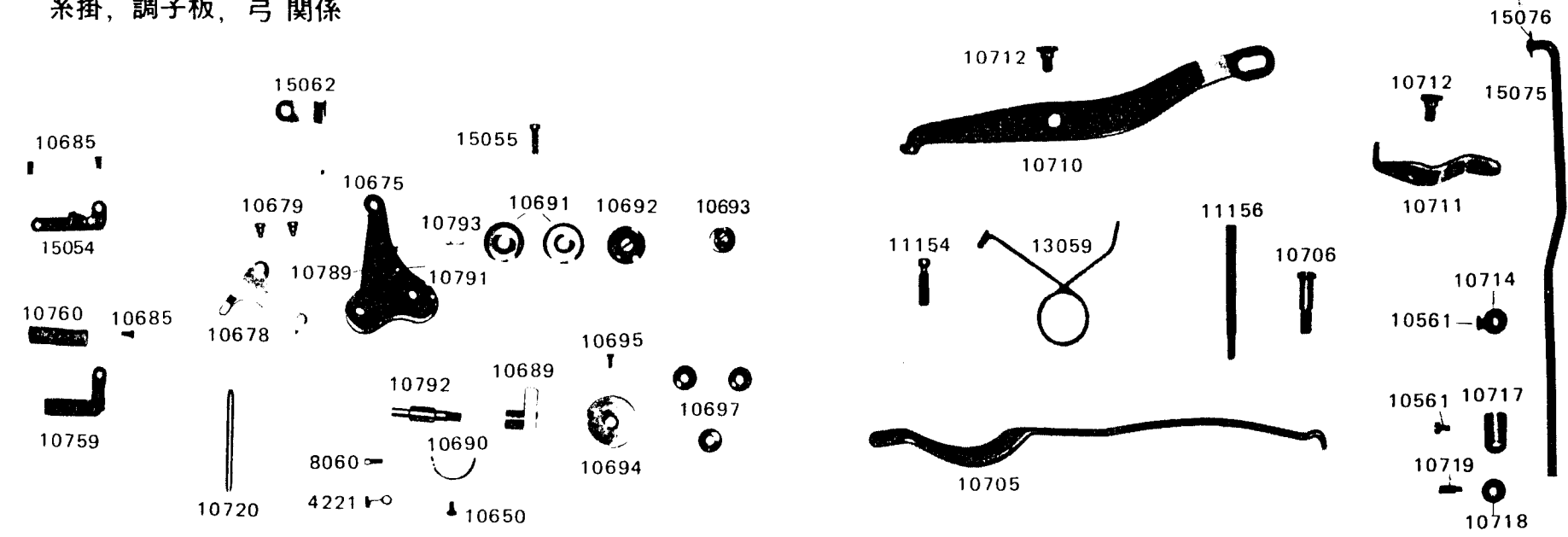
MODEL: 210B-6LG, 7LG



K
L
M
N
O
P
Q
R
S
T
U



THREAD GUIDE, TENSION, KNEE LIFTER LIFTING LEVER
糸掛, 調子板, 弓 関係



NOTE! WHEN ORDERING PARTS, PREFIX ALL NUMBERS WITH CS, EXAMPLE CS _____

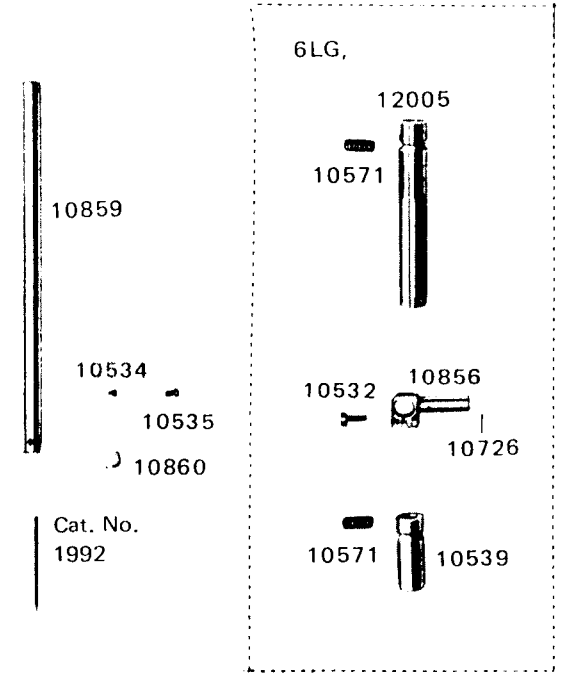
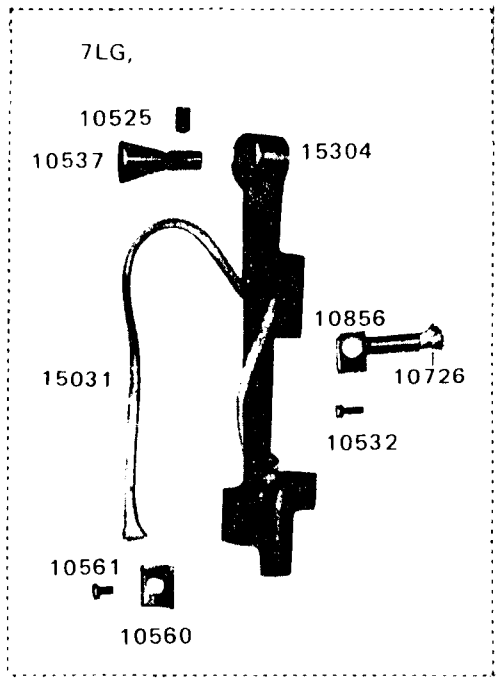
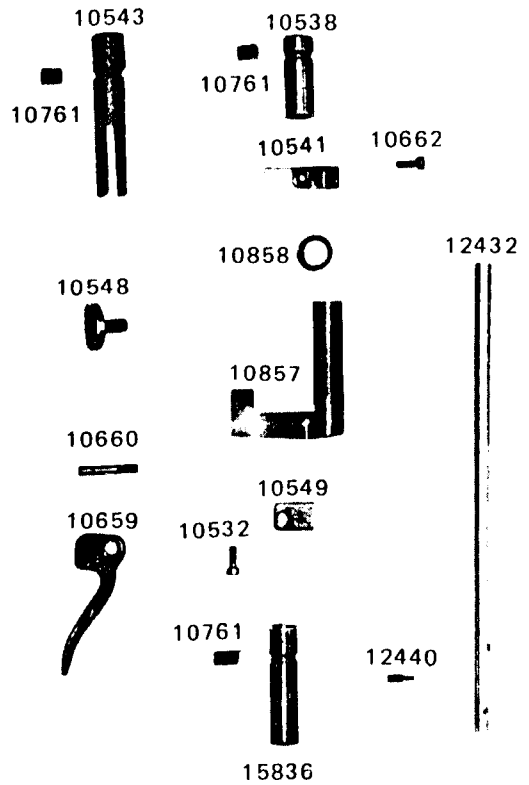
1 2 3 4 5 6 7 8 9 10 11 12 13 14 15

PRESSER BAR MECHANISM

押え棒関係

NEEDLE BAR MECHANISM

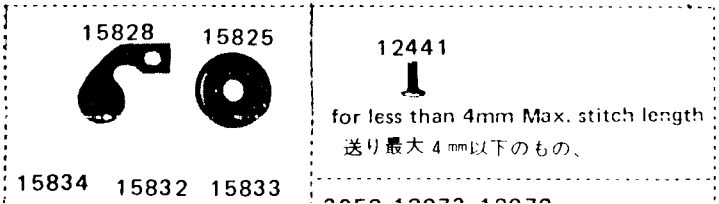
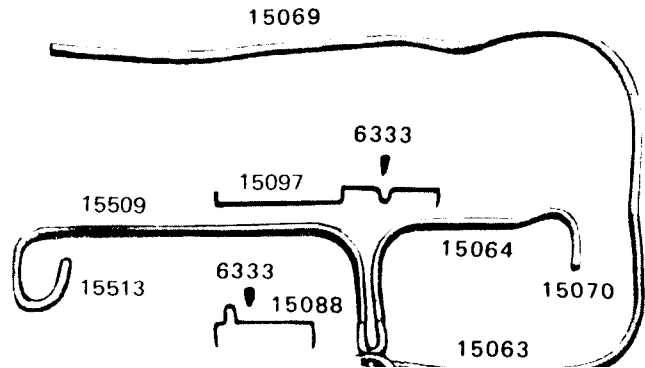
針棒関係



Cat. No.
1992

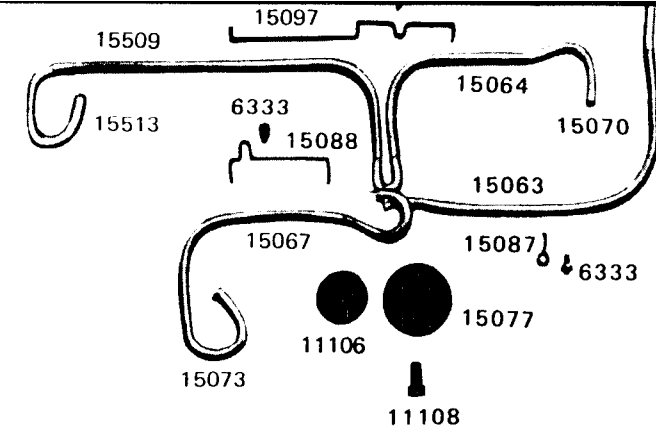
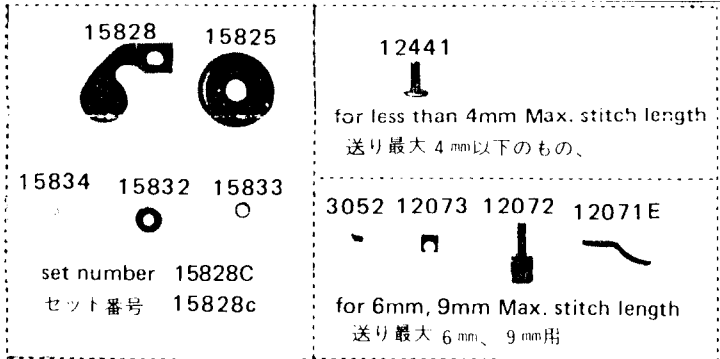
OIL WICK FOR BED

ベッド油芯関係



for less than 4mm Max. stitch length
送り最大4mm以下のもの、

A
B
C
D
E
F
G
H
J
K
L



SPECIFICATION FOR EACH MODEL 仕様別部品表

Model 機種	Max. stitch length 送り最大 mm	bed slide (left) 角板 (左)	needle plate 針板	bed slide (right) 角板 (右)	thread take up lever 天秤	cover for thread take up lever 天秤カバー	feed driving eccentric adjusting disc うず巻カム	stitch length indicator 文字リング
6LG	4	10045	15749 6031	10061 10667 10668			10909	15709
	9	10045	15749	10061	18003	15025	10626	10505
7LG	2.5	10045	15712	10061	15705	15258	10883	15704
	3.5	10045	15712	10061	15705	15258	15746	15706
	6	10045	15748	10061	15702	15025	15510	10943

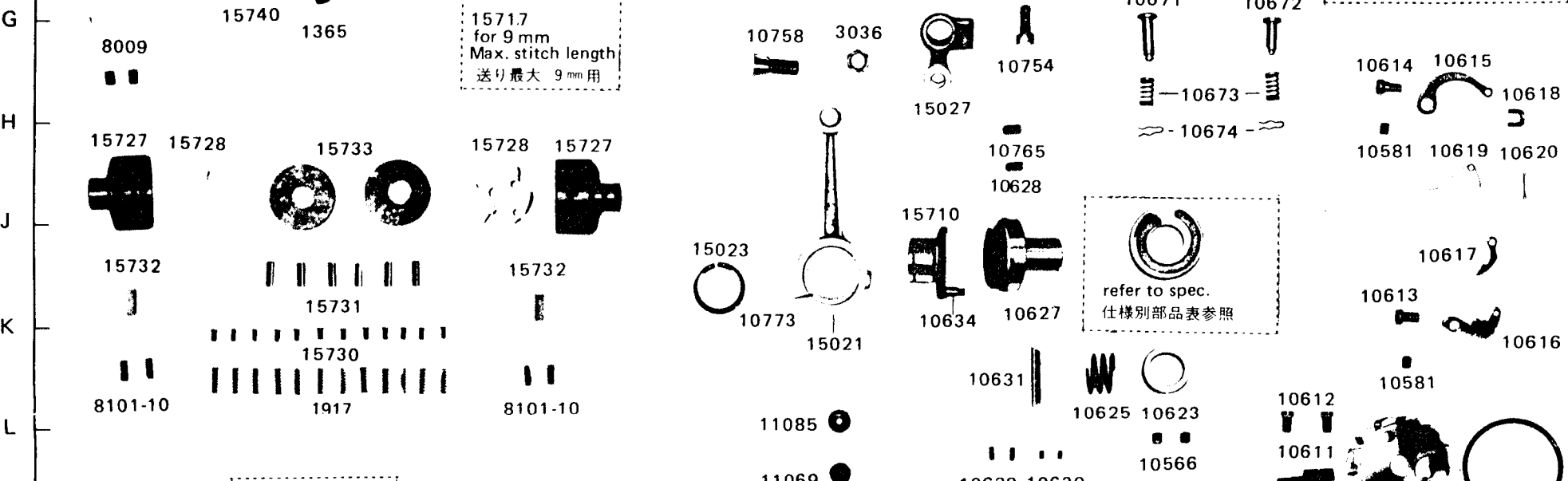
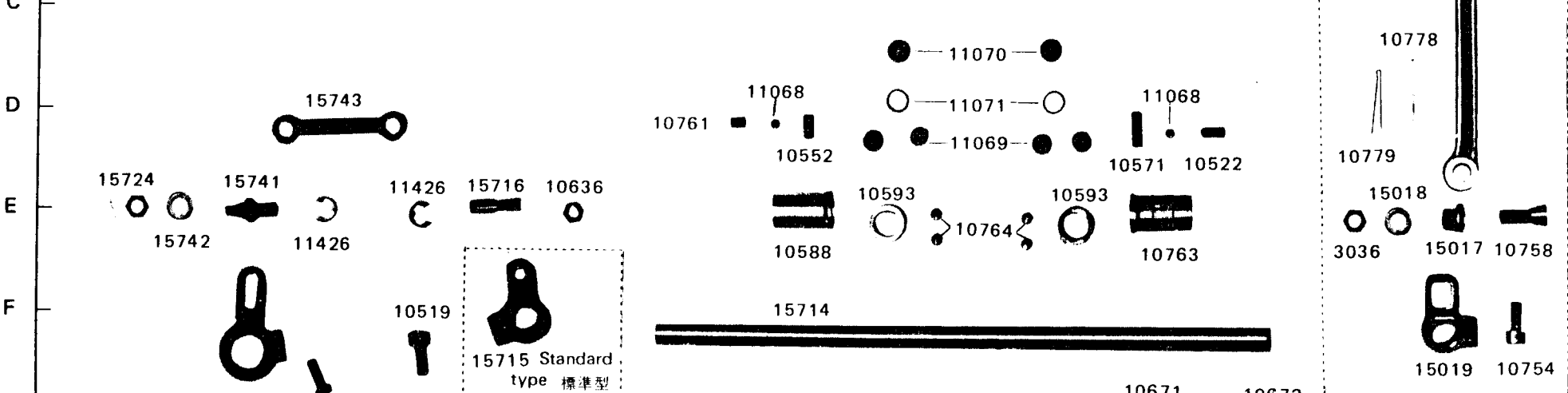
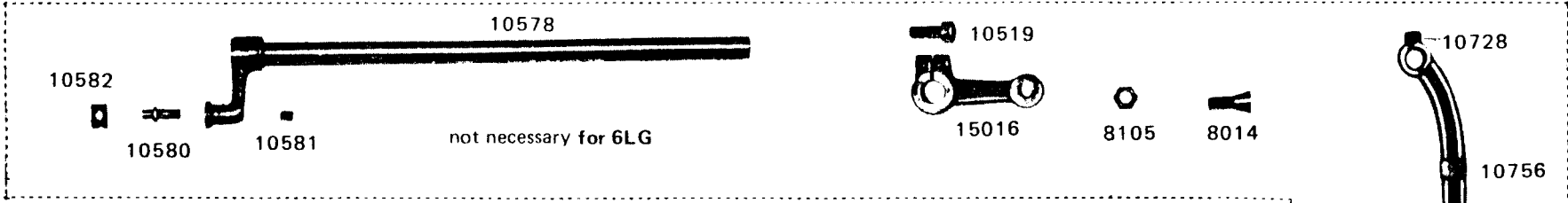
NOTE! WHEN ORDERING PARTS, PREFIX ALL NUMBERS WITH CS, EXAMPLE CS _____

LOWER SHAFT, FEED MECHANISM

送り機構, 下軸関係

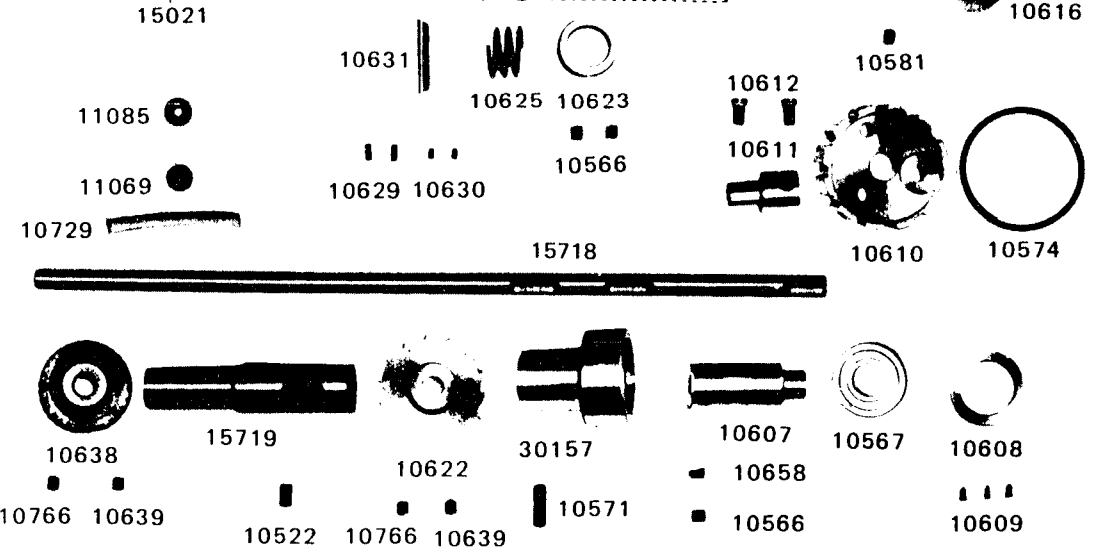
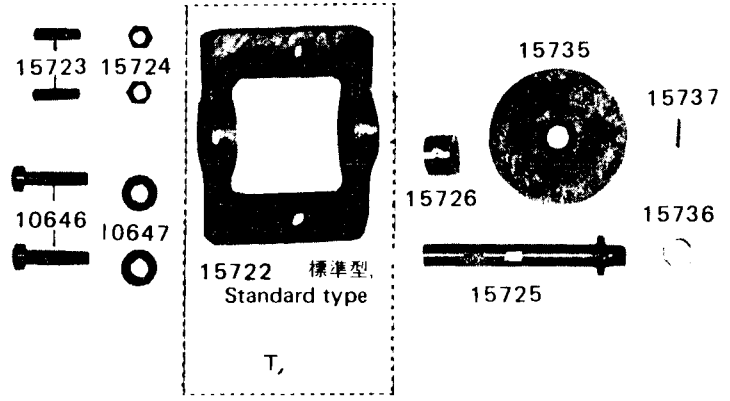
1 2 3 4 5 6 7 8 9 10 11 12 13 14 15

A
B
C
D
E
F
G
H
J
K
L

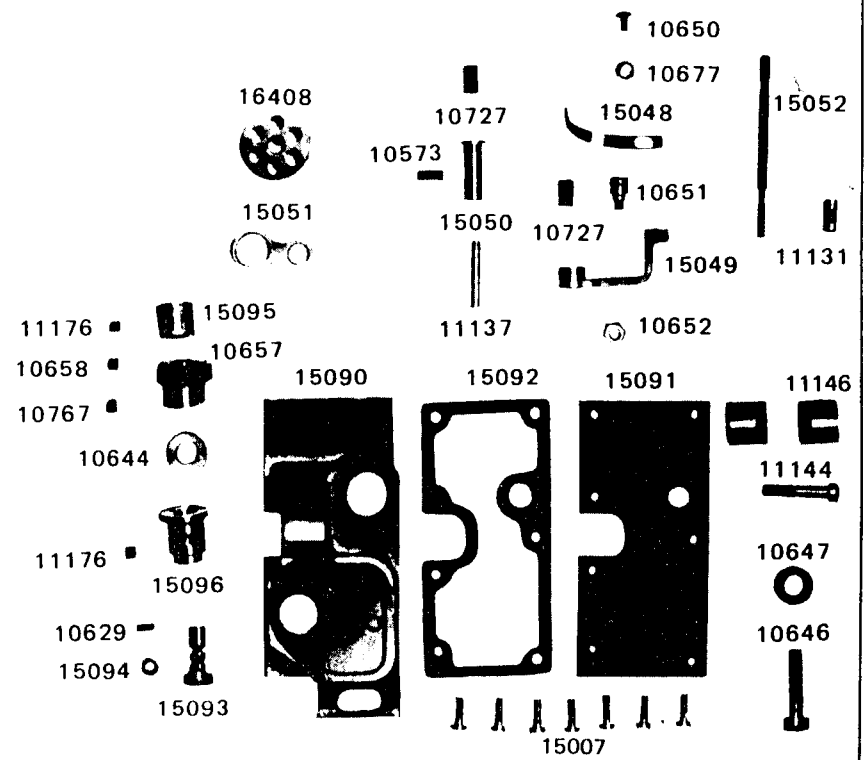
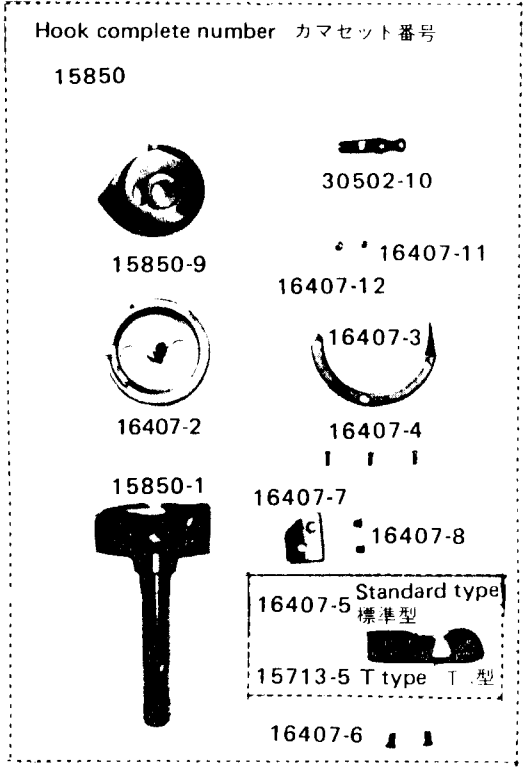


K
L
M
N
O
P
Q
R
S
T
U
V

8101-10 15730 1917 8101-10



HOOK MECHANISM カマ関係

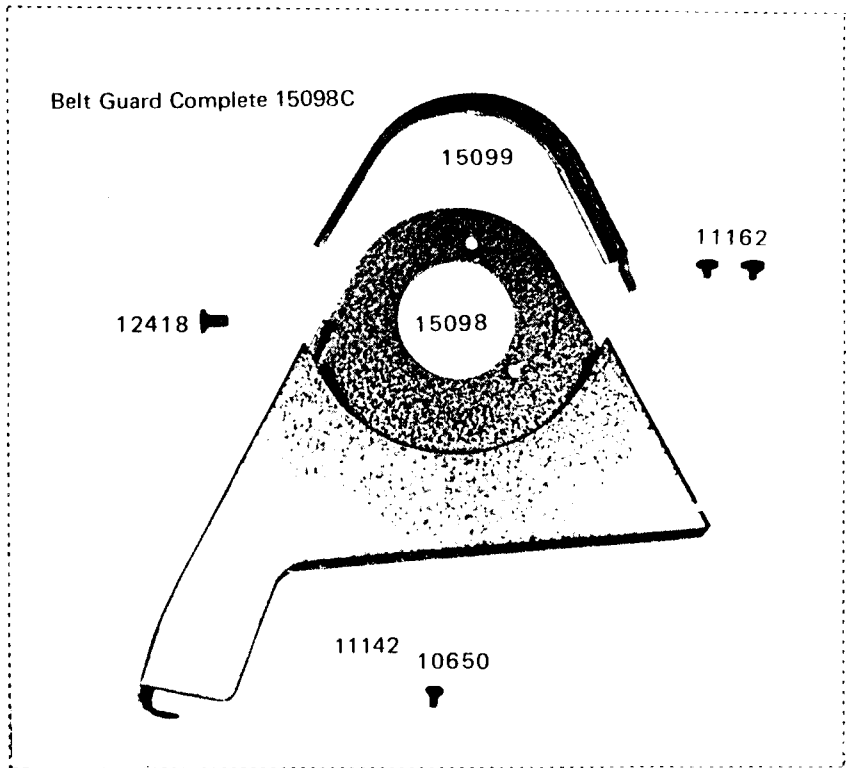


NOTE! WHEN ORDERING PARTS, PREFIX ALL NUMBERS WITH CS, EXAMPLE CS _____

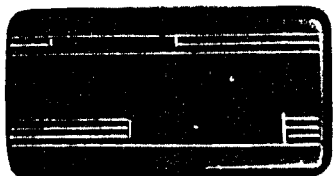
1 2 3 4 5 6 7 8 9 10 11 12 13 14 15

A
B
C
D
E
F
G
H
J
K
L

BELT GUARD (Optional Equipment) ベルトガード (別注品)



ACCESSORIES 付属品



8132



16408

Cat. No
1992



15101



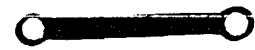
10748



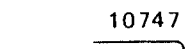
L
M
N
O
P
Q
R
S
T
U
V



8118



10748



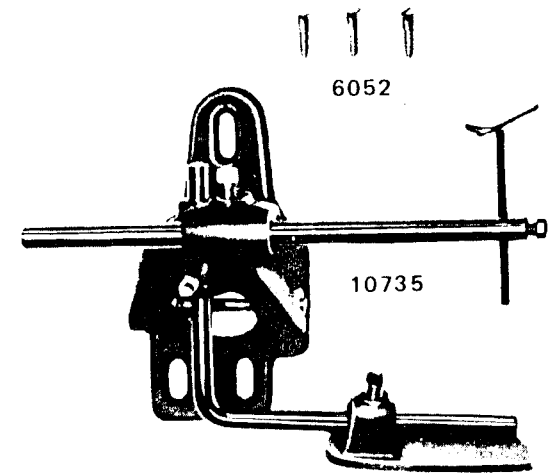
10747



6057

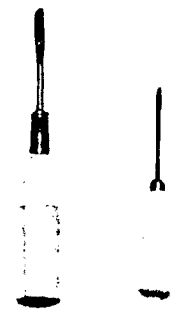


8125



6052

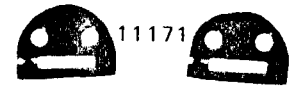
10735



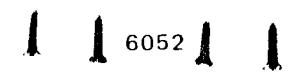
8120



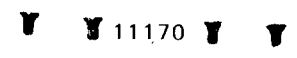
8121



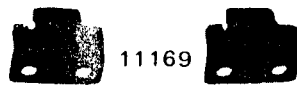
11171



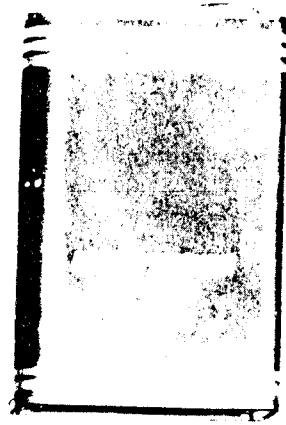
6052



11170



11169

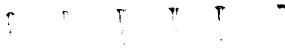


11193

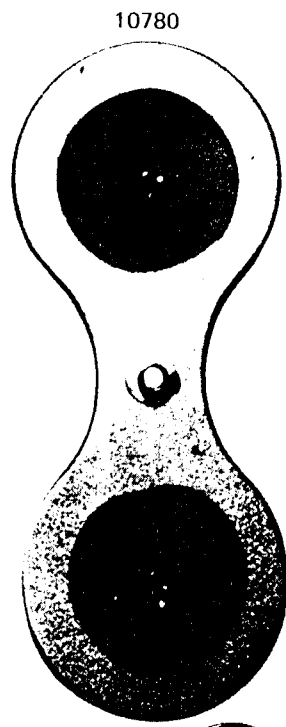
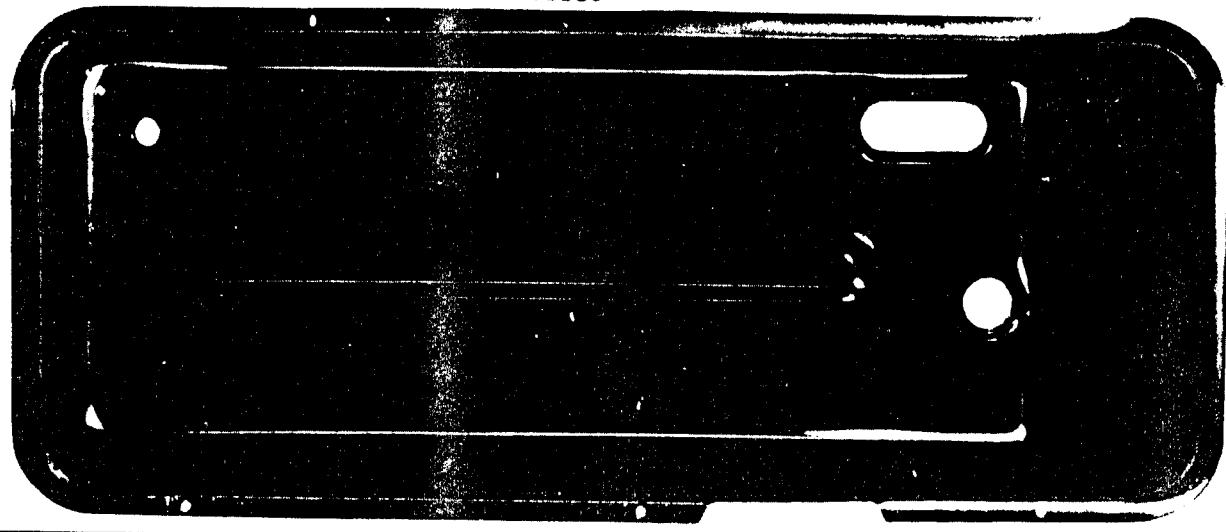


15082

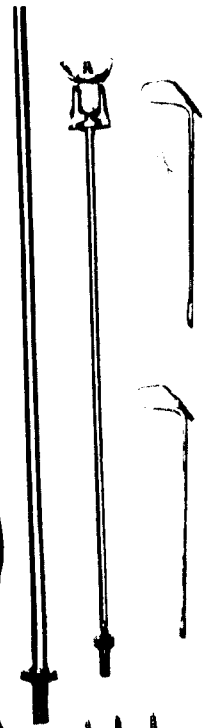
15081



15080



10780



NOTE! WHEN ORDERING PARTS, PREFIX ALL NUMBERS WITH CS, EXAMPLE CS _____