

FINEST QUALITY

*Union Special*®

LEWIS • COLUMBIA

INDUSTRIAL  
SEWING  
MACHINES

STYLE  
51300 BU

LIST OF PARTS  
FOR  
CLASS 51300

CATALOG  
NO.  
104 N

*Union Special* MACHINE COMPANY

CHICAGO

Catalog No. 104 N  
(Supplement to 104 L)

LIST OF PARTS

CLASS 51300

Style

51300 BU

The parts listed in this catalog are  
furnished at list prices for repairs only.

First Edition

Copyright 1960  
by  
Union Special Machine Co.  
Rights Reserved in All Countries

*Union Special*  
**MACHINE COMPANY**  
INDUSTRIAL SEWING MACHINES  
**CHICAGO**

Printed in U.S.A.

## IDENTIFICATION OF MACHINES

Each Union Special machine is identified by a Style number which is stamped into the name plate.

Machines similar in construction are designated by a Class number which contains no letters. Letters suffixed to the Class number indicate the individual Standard machine style. Letter "Z", however, is reserved as a suffix to the Standard style identification to specify machine is of Special construction.

## APPLICATION OF CATALOG

This is a supplement to Catalog No. 104 L and should be used in conjunction therewith. Only parts found on Style 51300 BU, but not on 51300 BG and illustrated. Opposite the illustrated page is listed each part by number, name, and amount required, which have been itemized by detail reference numbers.

This catalog applies specifically to the Standard style of machine as listed herein. It can also be applied with discretion to some Special machines in this Class. References to direction such as right, left, front, back, etc., are given from the operator's position while seated at the machine.

## DESCRIPTION OF MACHINE

High Speed Streamlined Flat Bed, Medium Throw, Top Grip Feed, One Needle, Light Weight Presser Bar and Needle Bar Driving Mechanism, Needle Bearing Needle Bar Drive, Single Reservoir Enclosed Automatic Lubricating System and Filter Type Oil Return Pump, Oil Pump Base Plate, Oil Siphon Assembly, Lateral Looper Travel, Work Space to Right of Needle Bar 1 Inch; Necessitated by the Top Feed Mechanism. Top Grip Feed Recessed in Presser Foot, Moves Horizontally, Matches Bottom Feed to Grip and Pull Material Through Machine.

51300 BU For edge seaming operations on trousers, slacks, dress pants, jackets, and similar garments of light to medium weight materials. Seam Specification 401-SSa-1. Stitch range 9 to 16 per inch.

## IDENTIFYING PARTS

Where construction permits, each Union Special part is stamped with its catalog number. A part too small for its complete catalog stamping is identified by a letter symbol which distinguishes it from another part similar in appearance.

Each part number represents the same part regardless of catalog in which it appears.

**IMPORTANT! ON ALL ORDERS, PLEASE INCLUDE PART NAME AND STYLE OF MACHINE FOR WHICH PART IS ORDERED.**

## TERMS

Prices are strictly net cash and are subject to change without notice. All shipments are forwarded at the buyer's risk f. o. b. shipping point. Parcel Post shipments are insured unless otherwise directed. A charge is made to cover the postage and insurance.

## NEEDLES

Each Union Special needle has both a type number and a size number. The type number denotes the kind of a shank, point, length, groove, finish, and other details. The size number, stamped on the needle shank, denotes the largest diameter of the blade measured in thousandths of an inch midway between the shank and the eye. Collectively, type number and size number represent the complete symbol.

Selection of proper needle size should be determined by the size of the thread used. Thread should pass freely through the needle eye in order to produce a good stitch formation.

For best results, use only genuine Union Special needles in the operation of this machine. They are packaged under our brand name, *Union Special* which is backed by a reputation for producing highest quality needles for more than three-quarters of a century.

To have needle orders promptly and accurately filled, forward a sample needle, the empty package, or description on label. A complete order would read as follows: "1000 Needles, Type 128GAS, Size 040".

### Description and Sizes

128GAS    Short, double groove, struck groove, ball eye, spotted, chromium plated - sizes 032, 036, 040, 044, 049, 054, 060.

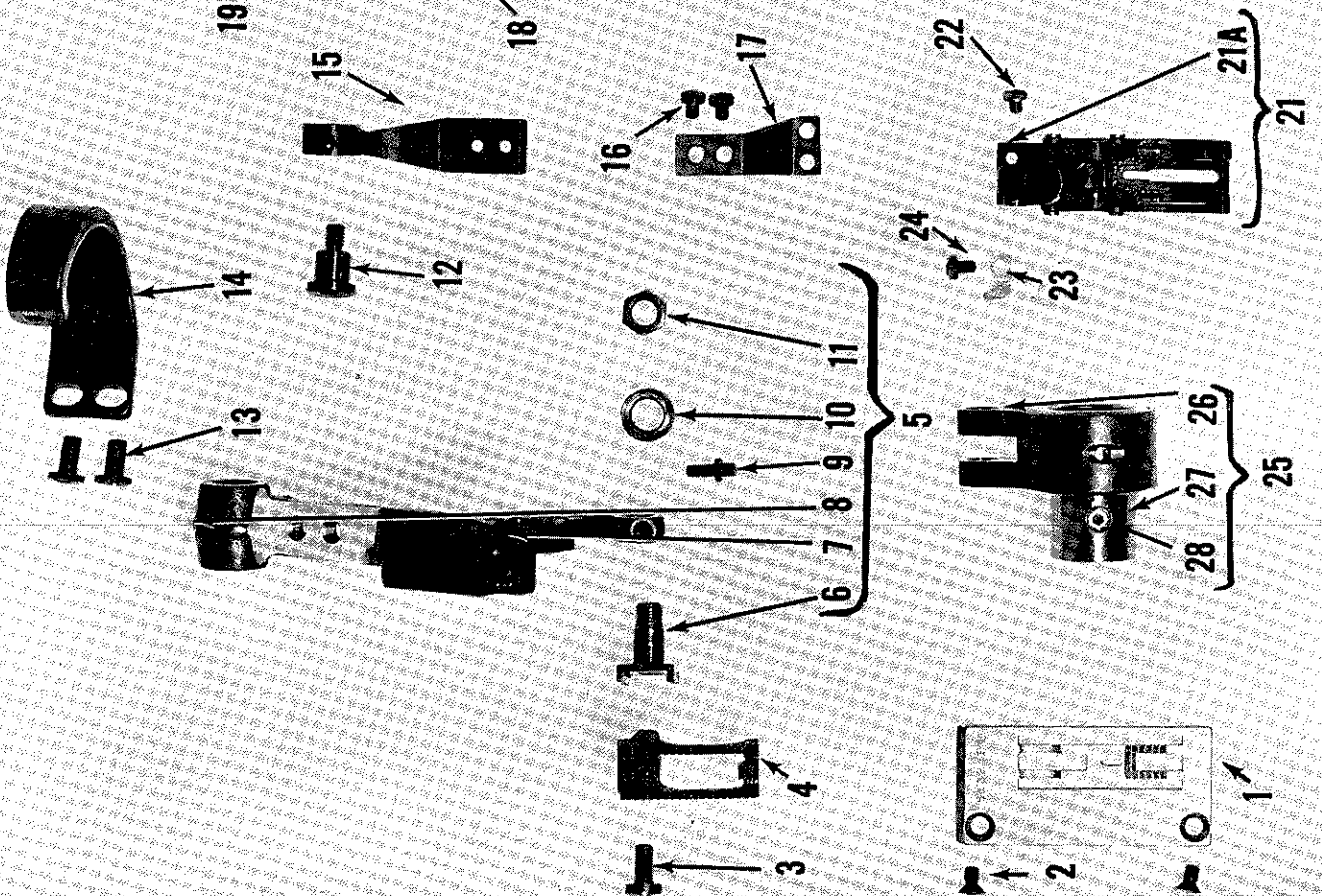
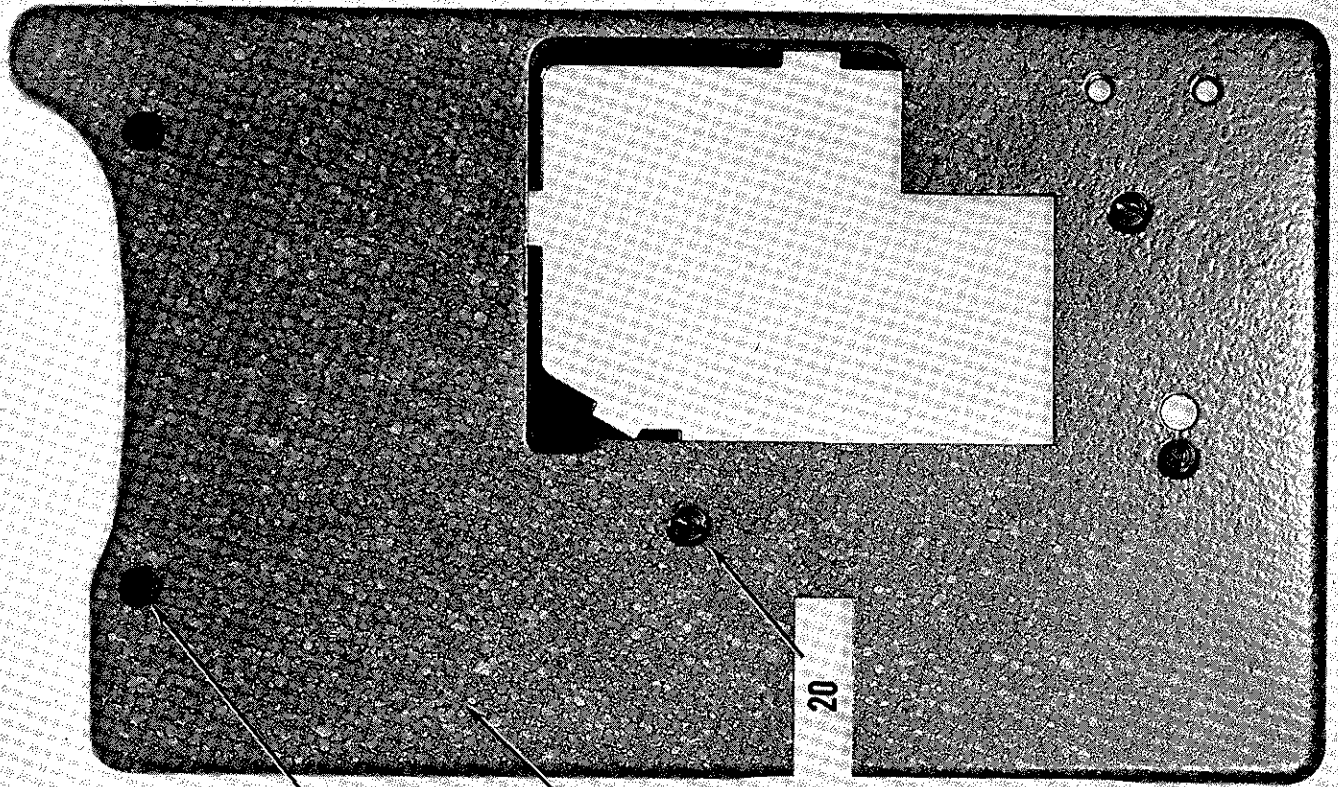
Standard needle for Style 51300 BU is Type 128GAS in size 040.

## OILING

The oil has been drained from the machine before shipping, and the reservoir must be filled before beginning to operate. Use a straight mineral oil with a Saybolt viscosity of 200 to 250 seconds at 100° Fahrenheit.

Oil is filled at spring cap in the top cover, and the level is checked at the sight gauge on the front of the machine. Oil level should be maintained between the red lines on the gauge. The capacity of the oil reservoir is twelve ounces.

A daily check before the morning start should be made and oil added as required. Oil which has gone through the machine is filtered and pumped back into the main reservoir, making too frequent oilings unnecessary. Excessive oil in the main reservoir may be drained at the plug screw in the main frame directly under the handwheel. After draining oil, wipe the hole and plug screw dry, paint the hole and screw with a little gasket cement and reassemble screw.

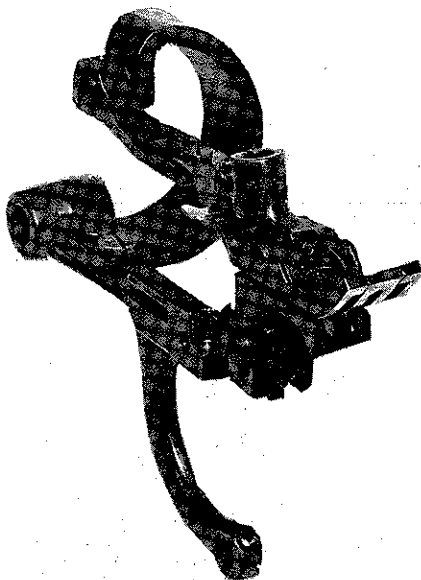


The parts illustrated on the preceding page and described below represent parts used on Style 51300 BU, but are not used on Style 51300 BG.

Refer to picture on the bottom of this page for assembling parts represented on the preceding page and described below.

Use Catalog No. 104 L for all parts not illustrated or described here.

<u>Ref. No.</u>	<u>Part No.</u>	<u>Description</u>	<u>Amt. Req.</u>
1	51324 F	Throat Plate -----	1
2	87	Screw, for throat plate-----	2
3	22528	Screw, for feed dog-----	1
4	51305 F	Feed Dog -----	1
5	51334	Feed Bar -----	1
6	51134 H	Feed Dog Holder -----	1
7	538	Feed Dog Height Adjusting Screw -----	1
8	22560 B	Screw-----	1
9	22863	Feed Dog Holder Adjusting Screw -----	1
10	51134 J	Washer -----	1
11	258 A	Nut -----	1
12	22758 G	Screw -----	1
13	376 A	Screw -----	2
14	51334 A	Feed Foot Driving Arm -----	1
15	51334 D	Connecting Rod-----	1
16	28	Screw -----	2
17	51334 C	Connecting Rod Flat Spring -----	1
18	51301 H	Cloth Plate -----	1
19	22839 C	Screw, for cloth plate-----	2
20	80	Screw, for cloth plate-----	3
21	51320 F	Presser Foot -----	1
21A	51330 N	Presser Foot Feeding Section -----	1
22	22561	Screw -----	1
23	51330 S	Chain Cutting Knife -----	1
24	28	Screw -----	1
25	29476 DV	Feed Lift Eccentric Assembly -----	1
26	51145 A	Eccentric Bearing-----	1
27	51406	Eccentric, .062 inch throw-----	1
28	22894 D	Screw -----	1



Sales Agents For Also Agent for (L) LEWIS and  
UNION SPECIAL Machines; (C) COLUMBIA where marked.

**AFRICA**

KENYA, NAIROBI—Pollack (E.A.) Ltd.—Also: Uganda and Tanganyika, Corner House, Harding Street (L & C)  
MAURITIUS, PORT LOUIS—(Bag Closing & Bag Making Machines) Hall, Geneva, Langlois, Ltd., 42 Sir William Newton St., P.O. Box 77.  
MOROCCO, CASABLANCA—R. Geissmann & Fils, Rue du Soldat Sanchez, (L)  
REPUBLIC OF CONGO, ELIZABETHVILLE—Progress, B. P. 2166 (sub-agent Berzack Bros. Ltd., Johannesburg, Union of South Africa.) (L)  
SOUTHERN RHODESIA, FEDERATION OF RHODESIA & NYASALAND, BULAWAYO—(Textile Machines) Berzack Bros. (Rhodesia), 16-14th Ave. (L)  
SALISBURY—(Textile Machines) Berzack Bros. (Salisbury) Pvt. Ltd., 102 Siniaa St. (L)—(Bag Closing Machines) South African Scale Co., Pty., Ltd., Forbes & Angwa Sts.  
SUDAN, KHARTOUM—Franco Pinto (Sudan) Ltd., P.O. Box 305.  
TUNISIA, TUNIS—Comptoir Industriel & Menager C.I.M. 8 Rue du 18 Janvier 1952. (L)  
UNION OF SOUTH AFRICA, JOHANNESBURG—(Textile Machines) Berzack Bros. Ltd., Barbara House, 135/7 Pritchard St. Branches at CAPE TOWN—78 Darling St.; DURBAN—72-74 Commercial Road; PORT ELIZABETH—58 Queen St. (L)  
JOHANNESBURG—(Bag Closing Machines) South African Scale Co., Pty., Ltd., 32 Van Brandis St. Branches at: BLOMfontein—53 Zastron St.; CAPE TOWN—Wales & Bree Sts.; DURBAN—22 Aliwal St.; EAST LONDON—38 Argyle St.; PORT ELIZABETH—Box 611. Also at PIETERMARITZBURG, PRETORIA, VEREENIGING and WORCESTER.

**AUSTRALIA**

Sole Distributor—Capron, Carter (Pty.) Ltd. (L)  
NEW SOUTH WALES, SYDNEY—86 Liverpool St.  
QUEENSLAND, BRISBANE—454 Brunswick St., Valley, N. I.  
SOUTH AUSTRALIA, ADELAIDE—(Sub-agents) Topp & Farmer, Ltd. 177 Hindley St.  
TASMANIA, HOBART—(Sub-agents) Reliance Trading Co., 105 MacQuarie St.  
VICTORIA, MELBOURNE—78 A'Beckett St.  
WEST AUSTRALIA, PERTH—(Sub-agents) Thomsons, Ltd., 789 Hay St.

**ASIA**

CAMBODIA, PHOM-PENH—Denis Freres, P.O. Box 48. (C & L)  
HONGKONG—G. R. Coleman Co. (Hongkong) Ltd., Room 308, Bank of Canton Bldg., 6 Des Voeux St., Central. (L & C)  
INDIA, CALCUTTA—Don, Watson & Co., (Pvt.) Ltd., 19 British Indian St. (L)  
JAPAN, OSAKA—Kondo Sewing Machine Co., 153 Umegae-cho, Kita-ku. (L)  
KOREA, SEOUL—Uebersee-Handel A.G., Rm. 604, Bando Bldg., 180 1-ka Ulchiro; Chung-Ku, Int. P.O. Box 1268. (L)  
LAOS, VIENTIANE—Denis Freres, P.O. Box 133. (C & L)  
PAKISTAN, KARACHI—2—Universal Trading Corp., 29 Zeeat Mansion; McLeod Road. (Textiles Machines Only) (Bag Closing and Bag Making Machines)—Thomas C. Keay, Ltd., 15 Baltic Street, Dundee, Scotland.  
TAIWAN, TAIPEI—G. R. Coleman Co. (Hongkong) Ltd., 16 Nan Yang St. (L & C)  
THAILAND, BANGKOK—Yip In Tsai & Co., Ltd., P.O. Box 23. (Bag Making & Bag Closing Machines)  
VIETNAM, SAIGON—Societe des Riz d'Indochine, Denis Freres, P.O. Box 444, 4 Rue Tu Do. (C & L)

**BRITISH WEST INDIES**

Union Special International, Inc.

JAMAICA, KINGSTON—Morris E. Parkin, 202 King St. (L)  
BAHAMAS, NASSAU—H. L. Simon & Co., 2650 N.W. 5th Ave., Miami 37, Florida

**EUROPE**

AUSTRIA, VIENNA—Firma Näscher, Mariahilferstr. 51. (L)  
BELGIUM, BRUSSELS—Union Special Machine Corporation of America, 23 Rue Philippe de Champagne, Henri Deloaf, Mgr. (C)  
BRITISH ISLES—(Bag Closing and Bag Making Machines) Thomas C. Keay, Ltd., 15 Baltic St., Dundee, Scotland.  
DENMARK, COPENHAGEN—Rothenberg Specialmaskiner for Sy-Industrien A/S, Nikolaj Plads 23. Offices at: AALBORG, HERNING, KOLDING, RISSKOV-AARHUS AND SILKEBORG. (L)  
EIRE, DUBLIN—(Textile Machines) Machines, Ltd., 24 Upper Abbey St. (C) (Bag Closing and Bag Making Machines) Thomas C. Keay, Ltd., 15 Baltic St., Dundee, Scotland.  
ENGLAND—(Textile Machines)—LEICESTER, Union Special Machine Co., Ltd., 25 Bide Street, Braunstone Gate. A. B. Fitzpatrick, Mgr. LEEDS, YORKSHIRE, C. Waters, 111 Alderton Heights, Moortown. LONDON, E.C. 1, Union Special Machine Co., Ltd., 15-17 City Road. G. Johnson & Son (Sewing Machinery Ltd.), 53 Great Titchfield St. London W.1. MANCHESTER 1, S. A. Smith (Manchester) Ltd., 34 Oxford Road. PORTSMOUTH, Saunders Machine Co., (Portsmouth) Ltd., 110 Kingston Crescent. (Bag Closing and Bag Making Machines)—Thomas C. Keay, Ltd., 15 Baltic Street, Dundee, Scotland.  
FINLAND, HELSINKI-LAUTTASAARI—Suomen. Koneliike O/Y, Valtionmenkatu 13. Branches at TURK, Ytiopistonkatu 16. TAMPERE-Penteoiliisuostalo (L & C)  
FRANCE, PARIS—Cie. des Machines Union Special de France, 91 Ave. de la Republique, Georges Linotte, Mgr. GERMANY, STUTTGART—Union Special Maschinenfabrik, G.m.b.H., Schwabstr. 33. A. W. Krieger, Managing Director. BIELEFELD BRANCH, Bielefeld, Detmolder Str. 244. EBINGEN BRANCH, Ebingen/Württ., Gartenstr. 44. FRANKFURT BRANCH, Frankfurt/M.-Rödelheim, Reichsburgstr. 8. HAMBURG BRANCH, Hamburg-Eimsbüttel, Lopenbergstraße 4d. KÖLN BRANCH, Köln/Rh., Auf dem Hünenrücken 25. MÜNCHEN BRANCH, Gmund/Tegernsee, Bernäckeriedlung 7. (C) and Lewis button sewers. GREECE, ATHENS—Michel D. Dimoulis, 30 Petraki St. (L & C)  
ITALY, MILANO—Giovanni Conti & Nipoti, Via Varese 18. (L)  
THE NETHERLANDS, AMSTERDAM—N. V. Machinehandel C. & H. Verbeek, Kloveniersburgwal 77. Offices at: ENSCHDE, GRONINGEN, ROTTERDAM, SITTARD. (L & C) NORTHERN IRELAND, BELFAST—(Textile Machines) W. & J. Bogod & Co., Ltd., 6 Linenhall St. (C)  
NORWAY, OSLO—Jac. Jacobsen A/S, Kr. Augustsgate 19 (Tullingen). BERGEN—Bjornsonst 24. (C)  
PORTUGAL, OPORTO—Rost & Janus, Succs. Lda., Rua Barao de Forrester 914. (L)  
SCOTLAND, DUNDEE—Thos. C. Keay, Ltd., 15 Baltic St. (Bag Closing and Bag Making Machines). SCOTLAND, GLASGOW, S.E.—(Textile Machines) Allardice & Co., 9 Stevenson St.  
SPAIN, BARCELONA—Rapida, S.A., Avino 9. (L)  
SWEDEN, BORAS—Rud. Nyström & Co., A/B, Lilla Brannergärdagen 6. Branches at OREBRO-Ostra Bangatan 18; MALMO, S. Forstadsгатan 16. Sub-Agent STOCKHOLM, A/B Forsberg & Kato, Tomtebagatan 38.  
SWITZERLAND, ZURICH—M. L. Bourquin, Albisriederstrasse 226.

**LATIN AMERICA**

Union Special International, Inc.

ARGENTINA, BUENOS AIRES—Pamaco Costura, S.A., San Jose 350 (Union Special Machine Company), (L) (C)  
BRAZIL, SAO PAULO—Pancostura, S.A.—Industria e Comercio, Rua Aurora 57A-71. Branches at PORTO ALICRE—Rua Voluntarios da Patria 533; RECIFE—Rua Princesa Isabel 105; RIO DE JANEIRO—Rua Alexandre MacKenzie 117. (C & L)

CHILE, SANTIAGO—Lowenstein & Stewart, S.A.C., Calle Santo Domingo 1140. (L)  
COLOMBIA, BOGOTA—Macalzado, Ltda., Calle 13 #22-53. (L) Branches at BARRANGUILLA—Calle 37 #39-51. BUCARAMANGA—Calle 34 #17-45. CALI—Carrera 7a #14-35/35. MEDELLIN—Carrera 51, (Bolivar) #41-180. (L)  
COSTA RICA, SAN JOSE—Champton Co., Ltda., Apartado 2742.  
CUBA, HAVANA—(Textile & Bag Making Machines) Antilla Yarn & Supply Co., S. A., Factoria 70. (L) GUANA- BACOA, HAVANA—(Bag Closing Machines) Miguel A. Vilato, Edificio Martinez y Vilato, Via Blanca Rd., Apartado 644, Havana.  
DOMINICAN REPUBLIC, CIUDAD TRUJILLO—Luis Dominguez, S. Calle 19 de Marzo #25. (L)  
ECUADOR, GUAYAQUIL—Richard O. Custer, S.A., 9 de Octubre 211-213. Branch at QUITO—Carrera Benalcazar 659.  
EL SALVADOR, SAN SALVADOR—Vairo Hermanos, Colonia Vairo. (L)  
GUATEMALA, GUATEMALA—Compania Argo-Comercial, S.A., 8a Avenida Sur #10-43. (L & C)  
MEXICO, MONTERREY, N.L.—Talleres Perez Zozaya, S.A. de C.V., Cuauhtemoc Norte 335. Branches at: GUADALAJARA, JAL.—Hidalgo 45 y 47; MEXICO, D.F.—Distribuidora Union Especial, S.A. de C.V., Ave. Pino Suarez 99-a (Apartado 12770); SAN LUIS POTOSI, S.L.P.—J. de las Reyes 80. (L)  
NICARAGUA, MANAGUA—Casa Hentgen, 1a Ave. S.E. #401. (L)  
PANAMA, PANAMA—Agencias Hagut, S.A. Ave. 7a Central 16-14.  
PERU, LIMA—A. y F. Wieso, S.A., Esq. Nunez y Filipinas. (L)  
PUERTO RICO, SAN JUAN—Abarca Warehouses Corp., P.O. Box 2352. (L)  
SURINAM, PARAMARIBO—Kipalani's, Ltd., 17-27 Maagden St. (L & C)  
URUGUAY, MONTEVIDEO—Storer & Cia., S.A., Uruguaya, Mercedes 1312. (L)  
VENEZUELA, CARACAS—H. Blohm, S.A., Dr. Paul A. Chorro 29 (L)

**NEAR EAST**

CYPRUS, LARNACA—Choupourian Agencies, P.O. Box 194. (L)  
EGYPT, CAIRO—A. Kavalidjian, 4 Midan el Cheikh Barakat. (L)  
IRAN, TEHRAN—Sava Trading Corp., Ave. Bazarjomehri 655. (L & C)  
IRAQ, BAGHDAD—Sons of O. O. Agopian, P. O. Box 121. (L & C)  
ISRAEL, TEL AVIV—L. Taube, Ltd., 15 Lilienblom St. (L)  
LEBANON, BEIRUT—Sons of O. O. Agopian, P.O. Box 1165. (L & C)  
SYRIA, DAMAS—Elias Aractingi & Fils, Sidi Amoud. (L & C)  
TURKEY, ISTANBUL—David ve Leon Varber ve Seriki, Hamdi Bay Gecidi 36, 38, 40, Posta Kutusu 385. (L & C)

**NEW ZEALAND**

Sole Distributor—H. A. Tuck & Co., Ltd. (L)  
AUCKLAND—171 Albert St. (L & C)  
CHRISTCHURCH—(Sub-agent) Glendermid, Ltd., 78 Lichfield St. (L & C)  
DUNEDIN—(Sub-agent) Glendermid, Ltd., 18 Dowling St. (L & C)  
WELLINGTON—Ford Bldg., Courtenay Place. (L & C)

**PACIFIC ISLANDS**

HAWAII, HONOLULU 13—(Textile Machines) Territorial Sales Co., 540 Kamani St. (L)  
HAWAII, HONOLULU—(Bag Closing and Bag Making Machines) H. S. Gray Co., 759 Puuloa Rd.  
PHILIPPINE ISLANDS, MANILA—(Textile Machines) Atkins, Kroll & Co., Inc., 124 Myers Bldg., Port Area. Branch at CEBU. (L) (Bag Closing and Bag Making Machines) Earnshaw Docks & Honolulu Iron Works Co., Tacoma & 2nd Sts., Port Area.

**Additional Sales Agents for (L) LEWIS and (C) COLUMBIA Machines**

AUSTRALIA, MELBOURNE—Michaelis, Hallenstein & Co., Pty., Ltd., 441 Lonsdale Street. (C)  
AUSTRIA, VIENNA—Franz Korpert, Wahingerstr. 141. (C)  
BELGIUM, BRUSSELS—N. V. Machinehandel C. & H. Verbeek, 57A Blvd. du Jardin Botanique, Buyl Building. (L)  
BRITISH ISLES—Eastman Machine Co., Ltd., 89 Beddington Lane, Croyden, Surrey, England. (L)—Showroom and Repair Shop: 15-17 City Road, London, E.C.1, England. LEEDS—4 Vernon St., Manchester-60-62 Corporation St.  
CHILE, SANTIAGO—Roberto E. Gottlieb & CIA, Catedral 1159. (C)  
CUBA, HAVANA—American Sewing Machine Co., Dragones 202. (C)  
DENMARK, COPENHAGEN—Dimas, Det Internationale Industrimaskine A/S, Gronnegade 10. (C)  
EIRE, DUBLIN—W. Blythman (Sub-Agent of The Eastman Machine Co.), 224 Parnell Street. (L)  
ENGLAND-CROYDON, SURREY—Eastman Machine Company, Ltd., 89 Beddington Lane. Branches at LEEDS—4 Vernon Street, MANCHESTER—60-62 Corporation Street (L)  
ENGLAND, LONDON—W. & J. Bogod & Co., Ltd., 85 City Road, London, E. C. 1 (C)  
FRANCE, PARIS—Societe G. Arnon & Cie., 36 Rue Debelleyne. (L)  
FRANCE, PARIS—Aspe-Dumont & Cie., 13 Rue de la Fontaine-Au-Roi. (C)  
GERMANY, BIELEFELD—Dürkoppwerke-Maschinen Gesellschaft m.b.H. (L) except button sewers (also branch offices of Dürkoppwerke)  
GERMANY, KREFELD—Herbert Janssen, Alte Linner Strasse 104. (C) (tie machines only)  
INDIA, DELHI—Munshi Ram B.Sc., Above Keventers, Kashmere Gate. (L)

ISRAEL, TEL AVIV—Israel Sewing Machine Co., 22 Yehuda Hafev St. (C)  
ITALY, MILANO—Mario Jeri, Via Morigi 13. (C)  
MEXICO, MEXICO, D.F.—Casa Diaz de Maquinas de Coser, Apartado Postal 7259. (C)  
MOROCCO, CASABLANCA—Durkopp Coudrex, 25 Rue Bascurnama (C)  
NORTHERN, IRELAND, Belfast—W. & J. Bogod & Co., Ltd., 6 Linenhall Street (C)  
NORWAY, OSLO—J. A. Johansen A/S, Torvgatan 10. (L)  
THE PHILIPPINES, MANILA—J. B. Y. Tanlimco Sons, Inc., 455-457 Junn Luna. (C)  
PUERTO RICO, SANTURCE—Humberto A. Collado, Box 6777, Loixa Station (C)  
SOUTHERN RHODESIA, FEDERATION OF RHODESIA & NYASALAND, BULAWAYO—African Sewing Machine Company, (Rhodesia) (Pvt.) Ltd.  
SWEDEN, BORAS—Aktiefelaget A. G. Gustafson, Kungsgatan 28. (L) Branches at MALMO—Stora Kvorngatan 29, STOCKHOLM—Kungsgatan 18.  
SWEDEN, BORAS—Husqvarna Industrismaskiner, Kungsgatan 34. (C)  
SWITZERLAND, ZURICH—Fritz Zellweger & Co., Selnaustrasse 27. (L)  
SWITZERLAND, ZURICH 4—A. Brunswiler, Strassburgstrasse 15. (C)  
UNION OF SOUTH AFRICA, JOHANNESBURG—African Sewing Machine Company (Pty.) Ltd., 85/87 Pritchard Street. Branches at: CAPE TOWN—110 Plain St.; DURBAN—16 Saville St. (C)  
URUGUAY, MONTEVIDEO—Compania Recons S.A. (Intercomp. Ltda.), Convencion 1374. (C)  
WALES, CARDIFF—W & J Bogod & Co., Ltd., Newport Road. (C)



# Union Special®

INDUSTRIAL SEWING MACHINES

## SALES OFFICES AND REPRESENTATIVES

### UNITED STATES

- ALLEN TOWN, PA., P.O. Box 542, Luther D. Cassell, Tel. Swift 7-2111.
- ★ATLANTA, GA., 2120 Plasters Bridge Road, N.E., William G. Booth, Mgr. Tel. Trinity 5-9237.
- BALTIMORE 15, MD., P.O. Box 2505, Ralph B. Foster, Tel. Sar. 7-8499.
- BELLEVILLE, N. J., 83 Floyd St., Joseph Loglisci, Tel. Plymouth 9-2006.
- BIRMINGHAM, ALA., 8630 First Ave. South, Lloyd D. Baldwin, Tel. Vernon 3-9904.
- ★BOSTON 11, MASS., 179 Lincoln St., William E. Palm, Mgr., Tel. Liberty 2-0147.
- CANTON, MASS., York St., RFD, Roy T. Pedersen, Tel. Canton 6-1412.
- ★CHICAGO 10, ILL., 400 N. Franklin St., Orville A. Ullrick, Mgr., Tel. Superior 7-6920.
- CINCINNATI, OHIO, P.O. Box 774, Raymond E. Hinton, Tel. Cherry 1-5558.
- CLEVELAND 3, OHIO, 6020 Euclid Ave., Sydney L. Hirsch Co., Tel. Express 1-8811.
- COLUMBIA, S. C., 2039 Winsor Hills Drive, Virlyn R. Crisler, Tel. Sunset 7-0863.
- COMMERCE, GA., Lakeview Drive, J. Tom Hanley, Tel. Federal 5-4061.
- ★DALLAS 19, TEXAS, 4200 Hines Blvd., P.O. Box 6727, Zack X. Bennett, Mgr., Tel. Lakeside 6-8369.
- DANBURY, CONN., 8 Merrimac St., Robert W. Gaines, Tel. Pioneer 8-9333.
- DECATUR, GA., 802 Derrydown Way, Joe V. Parker, Tel. Drake 7-5559.
- DENVER 10, COLO., 1801 South Marion St., Louis E. Carter, Tel. Spruce 7-7060.
- DETROIT 35, MICH., 16630 Ward Ave., John F. Lux, Tel. University 3-4948.
- DUBLIN, GA., 1615 Knox St., John W. Jones, Tel. Broad 2-4663.
- EL PASO, TEXAS, P.O. Box 5134, Edward E. Smith, Tel. Lynnwood 8-2928.
- GREENSBORO, N. C., P.O. Box 226, William D. Harrad, Tel. Broadway 3-7648, 1330 Mayfair Ave., Frank B. Stone, Tel. Broadway 5-4285.
- GREENVILLE, S. C., 25 Sir Abbot St., Orville W. Gregory, Tel. Cedar 9-5539.
- (HAZELTON) CONYNGHAM, PA., P.O. Box 46, Robert S. Vogt, Tel. Sunset 8-5556.
- JACKSON 3, MISS., 327 Eastview St., Jamie A. Boyette, Tel. Fleetwood 5-1976.
- JOHNSON CITY, N. Y., 471 Main St., John J. Laffer, Tel. Swarthmore 7-3994.
- KANSAS CITY 37, MO., 10904 Grandview Road, Terrie O. Biggers, Tel. South 1-5030.
- KNOXVILLE 19, TENN., 3905 Greenleaf Ave., Horace E. Clinard, Tel. 8-1865.
- LEBANON, PA., P.O. Box 274, David M. Bender, Tel. Crestview 2-6292.
- ★LOS ANGELES 15, CALIF., 119 E. Pico Blvd., Paul M. Mason, Mgr., Tel. Richmond 7-9187.
- LOUISVILLE 18, KY., 3122 McMahan Blvd., Bernard L. Rogers, Tel. Glendale 4-4956.
- LYNCHBURG, VA., P.O. Box 1075, Clarence D. Mairs, Tel. Victor 6-1215.
- LYNDHURST, N. J., 339 Harding Ave., Clarence A. Wheeler, Tel. Webster 9-4143.
- MEMPHIS 17, TENN., 4695 Dunn Rd., Richard J. Lindhorst, Tel. Mutual 5-6750.
- MIAMI 37, FLA., 2650 N.W. 5th Ave., Hyman L. Simon, Tel. Franklin 3-7363.
- MINNEAPOLIS, MINN., 2800 Texas Ave., St. Louis Park 26, Minn., Leonard W. Koehler, Tel. Midway 4-6236.
- MONTGOMERY 7, ALA., 1959 Amelia Drive, Garnet H. Hamlet, Tel. Amherst 5-0942.
- NASHUA, N. H., 21 Alder Dr., Forest Pk., Herman E. Haberman Jr., Tel. Tuxedo 2-9698.
- NASHVILLE 12, TENN., 1602 South Observatory Drive, William J. Brauch, Tel. Cypress 2-5123.
- NEW ORLEANS, LA., P.O. Box 1065, Chalmette, La., Larry A. Van Hooser, Tel. Edgewood 1-3106.
- ★NEW YORK 16, N. Y., 116 E. 27th St., Clarence L. Rosenquist, Mgr., Tel. Murray Hill 9-1266. Export Office, 315 W. 35th St., New York 1, N.Y., Herbert P. Johnson, Mgr., Tel. Chickering 4-8800. Lewis-Columbia Machines, 315 W. 35th St., New York 1, N.Y., Ben Zahler, Mgr., Tel. Chickering 4-8800.
- OKLAHOMA CITY 19, OKLA., 2226 Southwest 53rd St., G. B. Wiley, Tel. Mutual 5-2836.
- ★PHILADELPHIA 24, PA., 4234 Macalester Ave., Ben W. Merz, Mgr., Tel. Gladstone 5-9800.
- PITTSBURGH, PA. (Irwin), 30 Frick Ave., W. Dale Speer, Tel. (Pittsburgh) Locust 3-3589.
- PLANT CITY, FLA., 506 N. Gordon St., James C. Morgan, Tel. 752-1829.
- RUTHERFORD, N. J., 246 Sylvan St., Richard W. Whitson, Tel. Geneva 8-2178.
- ST. LOUIS 34, MO., 9860 Guthrie Ave., Carl E. McLaughlin, Tel. Chestnut 1-2368, 4158 Shenandoah Ave., James R. McConnell, St. Louis 10, Mo.
- SALT LAKE CITY, UTAH, 1215 E. 13th South St., Larry F. Rosvall.
- SAN ANTONIO 6, TEXAS, Cleo C. Smith, P.O. Box 201, Tel. Diamond 4-1158.
- SAN FRANCISCO 7, CALIF., 1275 Mission St., Robert J. Vail, Tel. Underhill 1-1580.
- SEATTLE, WASH., 12002 3rd St. N.W., Marvin H. Corns.
- TAUNTON, MASS., P.O. Box 141, Raynham, Walter P. Godek, Tel. VanDyke 2-6149.
- (TROY) LATHAM, NEW YORK, 19 Aragon Ave., Jack R. LeTourneur, Tel. State 5-6663.
- TUPELO, MISS., 1141 Woodlawn St., Glen Seawright, Tel. Vinewood 2-8217, 606 Racove Drive, Bill Haywood, Vinewood 2-5848.
- WORCESTER, MASS., 11 Woodside Dr., Grafton, Gus M. Buckley, Tel. Vernon 9-3440.
- YORK, PA., P.O. Box 884, Richard L. Smith, Tel. York 34-191.

### CANADA

Union Special Machine Co. of Canada, Ltd.

- BOWNESS, ALBERTA, P.O. Box 372, Norman W. Holt, Tel. BU 8-6796.
- ★MONTREAL 10, QUEBEC, Clyde F. Amey, Mgr., 40 Molire St., Tel. CRescent 6-2575.
- VANCOUVER, B.C., James Stewart, 9 West Pender, Tel. MU 5-6029.
- QUEBEC, QUEBEC, Lucien A. Bouchard, 174 Avenue Renaud, Tel. LA 3-8126.
- TORONTO 2B, ONTARIO, Les Yates, 355 King St. West, Tel. Empire 6-2939.
- WINNIPEG, MANITOBA, Frank Thierman, Rm. 201, Whitehall Bldg., 70 Arthur St., Tel. Whitehall 3-4933.

LEWIS-COLUMBIA MACHINES, NEW YORK 1, N. Y.:  
315 W. 35th St., Ben Zahler, Mgr., Elton S. Rockney,  
Asst. Mgr., Tel. Chickering 4-8800.

## AGENTS FOR LEWIS MACHINES

### UNITED STATES

- BALTIMORE 1, MD.—J. Dashew, Inc., 417 W. Baltimore St., Tel. Lexington 9-1838.
- BOSTON 11, MASS.—Zalkind Sewing Machine & Supply Co., 25 Kneeland St., Tel. Hancock 6-7338.
- CLEVELAND 3, OHIO—Sydney L. Hirsch Co., 6020 Euclid Ave., Tel. Express 1-8811.
- LOS ANGELES 15, CALIF.—Union Special Machine Company, 119 E. Pico Blvd., Tel. Richmond 7-9187.
- MIAMI 37, FLA.—H. L. Simon & Co., 2650 N.W. 5th Ave., Tel. Franklin 1-0323.
- FALL RIVER, MASS.—Zalkind Sewing Machine & Supply Co., 1059 S. Main St., Tel. Osborne 5-7847.
- KANSAS CITY 5, MO.—Textile Machinery Co., 324 W. 9th St., Tel. Victor 2-9558.
- NEW ORLEANS, LA.—P.O. Box 1065, Chalmette, La., L. A. Van Hooser, Tel. Edgewood 1-3106.
- NEW YORK 1, N. Y.—Union Special Machine Company, 315 W. 35th St., Tel. Chickering 4-8800.
- ROCHESTER 9, N. Y.—A. J. Adams Co., 1051 Culver Rd., Tel. Butler 8-7250.

### CANADA

- SAN FRANCISCO 3, CAL.—Apparel City Sewing Machine Co., 1155 Mission St., Tel. Market 1-6660.
- BOWNESS, ALBERTA, P.O. Box 372, Norman W. Holt, Tel. BU 8-6796.
- VANCOUVER, B.C., James Stewart, 9 West Pender St., Tel. MU 5-6029.
- WINNIPEG, MANITOBA, Frank Thierman, Rm. 201, Whitehall Bldg., 70 Arthur St., Tel. Whitehall 3-4933.